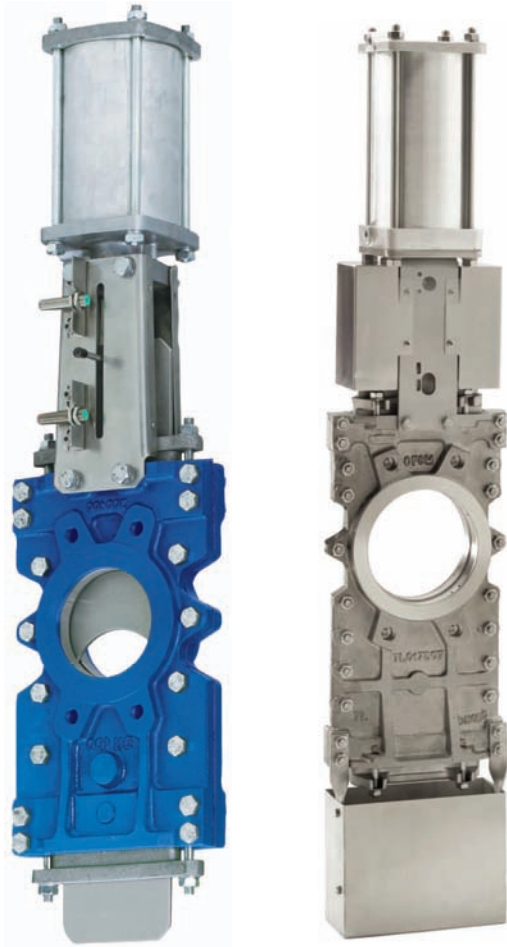


····· Tacwell Series TS

Through conduit Knife gate valve
DN50(2")~DN600(24"),
PN10/16 ANSI CLASS150



····· 设计特性 DESIGN FEATURES

- ◆ The double seat design assures a non-clogging shut off on either normal or reverse flow.
双阀座设计，确保正向或反向流动完全密封无堵塞。
- ◆ Pre-shaped parts, Rigid and light. Steel epoxy coated or stainless steel. Drilled for limit switches equipment, solenoid valve, security protection (CE)
预制支撑板，坚固、轻便，环氧涂漆保护钢板或不锈钢，为安装设备预留安装孔；限位开关、电磁阀、保护罩 (CE)
- ◆ Sharp knife Machined and polished, One piece gate with o-port design.
刀型闸板精加工并抛光，O型孔设计的一片式闸板
- ◆ Position indicator, indication of knife position.
位置指示，指示闸板的位置
- ◆ Gasket seat wrenching not possible, Molded rubber gasket and heel shaped.
成形橡胶密封和定位对阀座无损坏；
- ◆ Bolted packing gland, Adjustable on duty.
填料压盖螺栓，可在工作时调整
- ◆ Options: 1. Pneumatic Actuator 2. Electrical 3. Manual
选项: 1. 气动执行器 2. 电动执行器 3. 手动

····· 标准规范 APPLICABLE STANDARDS

- ◆ 设计标准 (Design): MSS SP81/TAPPI
- ◆ 结构长度 (Face to face): According to standard TACWELL
- ◆ 连接标准 (Connections): PN10/PN16; ANSI150
- ◆ 测试标准 (Tests): NFE29311 \ DIN3230/ISO5208/API598

····· 应用范围 General Application

The TS series knife gate is a bi-directional wafer valve designed for media with high consistency. The valve is used in a wide range of demanding applications in industries such as: Pulp & Paper, Wastewater Treatment Plant, Power Plants, Chemical plants etc.

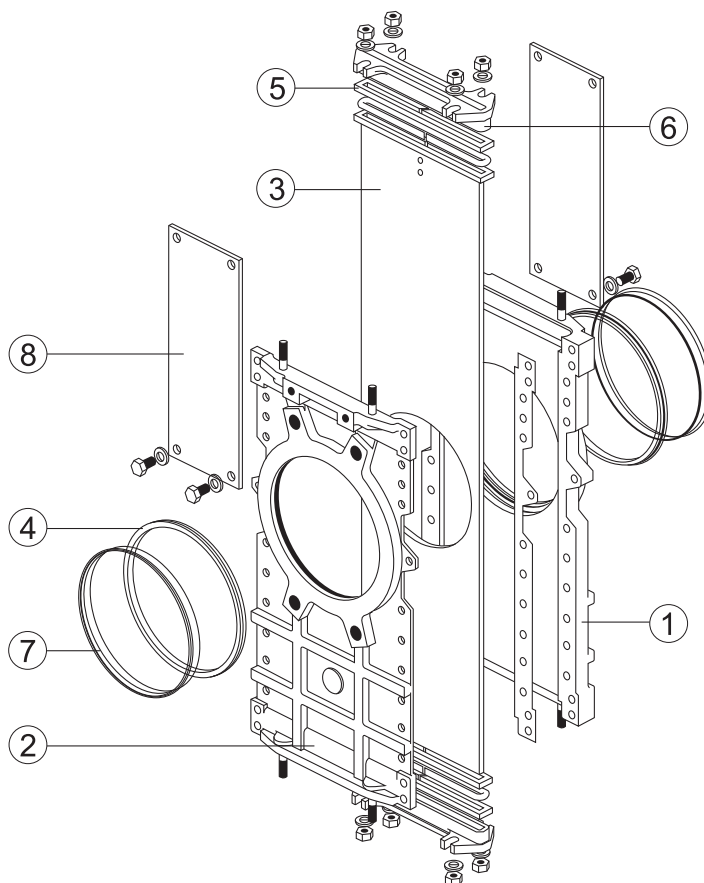
TS系列双向密封对夹式刀闸阀设计用于高浓度介质；该阀广泛应用于苛刻工况行业：制浆造纸、污水处理厂、电厂、化工厂等。

····· 技术参数 Technical Data

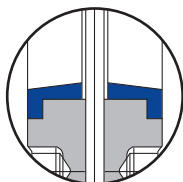
Ends	: Wafer
Size Range	: 2"~ 48" (DN50-DN600)
Pressure Rating	: PN10/16; ANSI150
Max. working pressure:	10bar(DN50-DN250), 6bar(DN300-DN400), 3.5bar(DN500-DN600),
Body	: GG25/ GGG40/CF8/CF8M/CF3M
Disk	: 304SS/316SS/316L
Seat Working Temp.	: NBR -10°C to +80°C EPDM -20°C to +120°C VITON -10°C to +180°C PTFE -10°C to +170°C
METAL SEAT	: MAX. 500°C

..... Series TS - Knife gate valve

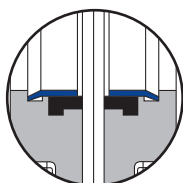
DN50-600, PN10/16 ANSI CLASS150



密封性能/TIGHTNESS



金属硬密封
Metal/metal
tightness



橡胶密封
Rubber gasket
tightness

穿透式刀闸阀/STANDARD PARTS LIST

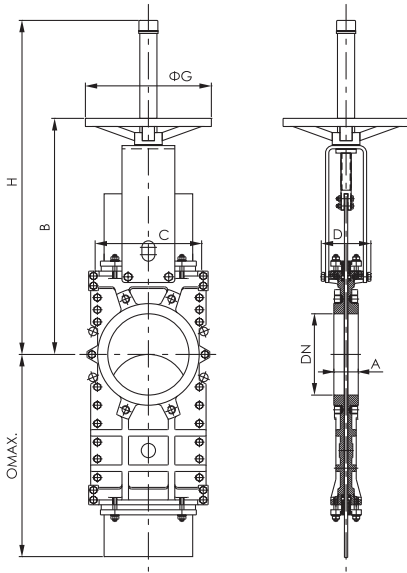
PART	CAST IRON	STAINLESS STEEL
1-Body	GJL250(GG25)/GJL400(GGG40)	CF8M
2-Body	GJL250(GG25)/GJL400(GGG40)	CF8M
3-Gate	AISI 304	ALSI 316
4-Seat	Metal/Metal or EPDM(NBR、PTFE...)	
5-Packing	PTFE (With a EPDM o-ring_)	
6-Gland Follower	Aluminium(DN 50 to DN 300) Ductile Iron(DN 350 toND 1000)	CF8M
7-Seat Retainer Ring	ALSI 304	
8-Yoke	Carbon Steel-Epoxy Coated	

Series TS - Knife gate valve

DN50-600, PN10/16 ANSI CLASS150

手轮/Handwheel

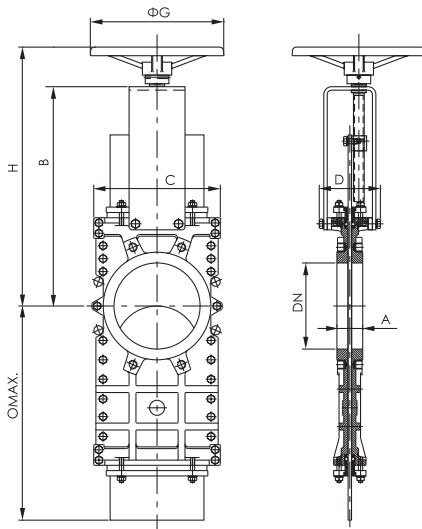
Series TSH



口径 DN	尺寸/Dimensions							
	A	B	C	D	øG	H	O max.	
mm inch	mm	mm	mm	mm	mm	mm	mm	
50 2"	40	286	152	100	225	429	232	
65 2-1/2"	40	308	167	100	225	451	255	
80 3"	50	333	182	100	225	476	310	
100 4"	50	374	202	100	225	517	367	
125 5"	50	408	216	100	225	601	432	
150 6"	60	459	241	100	225	652	497	
200 8"	60	581	294	122	310	822	635	
250 10"	70	676	356	122	310	1017	777	
300 12"	70	761	410	122	310	1102	905	
350 14"	96	852	473	197	410	1286	1047	
400 16"	100	952	538	197	410	1386	1171	
450 18"	106	1074	588	201	550	1583	1301	
500 20"	110	1164	646	201	550	1673	1461	
600 24"	110	1344	754	201	550	1963	1711	

暗杆手轮/Handwheel non rising stem

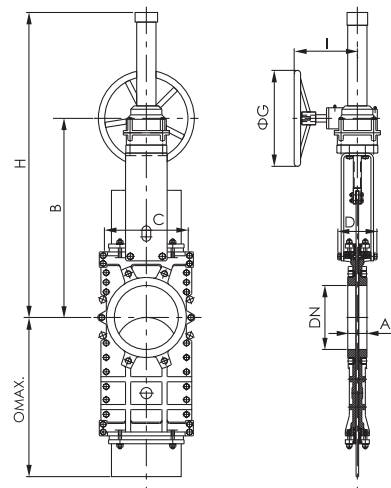
Series TSN



口径 DN	尺寸/Dimensions							
	A	B	C	D	øG	H	O max.	
mm inch	mm	mm	mm	mm	mm	mm	mm	
50 2"	40	242	152	125	225	320	232	
65 2-1/2"	40	264	167	125	225	342	255	
80 3"	50	289	182	125	225	367	310	
100 4"	50	330	202	125	225	408	367	
125 5"	50	364	216	125	225	442	432	
150 6"	60	415	241	125	225	493	497	
200 8"	60	510	294	142	310	602	635	
250 10"	70	605	356	142	310	697	777	
300 12"	70	690	410	142	310	782	905	
350 14"	96	787	473	197	410	897	1047	
400 16"	100	881	538	197	410	997	1171	
450 18"	106	1009	588	201	550	1120	1301	
500 20"	110	1099	646	201	550	1210	1461	
600 24"	110	1278	754	201	550	1389	1711	

蜗动头/Gear box actuator

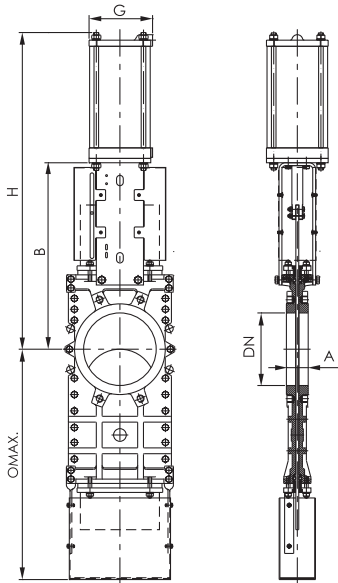
Series TSG



口径 DN	尺寸/Dimensions							
	A	B	C	D	øG	H	O max.	
mm inch	mm	mm	mm	mm	mm	mm	mm	
200 8"	60	584	294	122	300	994	635	
250 10"	70	679	356	122	300	1089	777	
300 12"	70	744	410	122	300	1154	905	
350 14"	96	836	473	197	450	1536	1047	
400 16"	100	936	538	197	450	1636	1171	
450 18"	106	1058	588	201	450	1758	1301	
500 20"	110	1148	646	201	450	1848	1461	
600 24"	110	1328	754	201	450	2028	1711	

双作用气动头/Double acting pneumatic actuator

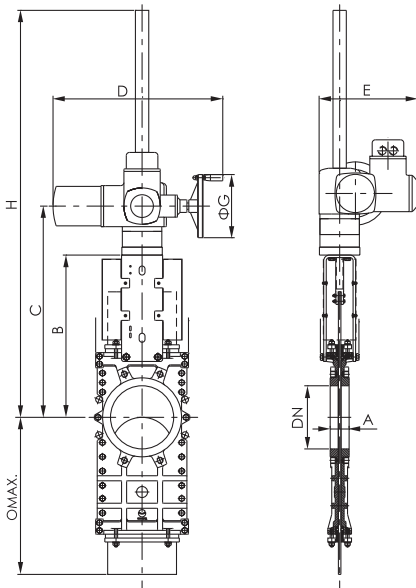
Series TSD/S



口径 DN	尺寸/Dimensions						Standard Cyl.	Connect.
	A	B	G	H	O max.			
mm inch	mm	mm	mm	mm	mm	mm		
50 2"	40	239	115	417	232	C80	1/4"G	
65 2-1/2"	40	261	115	454	255	C80	1/4"G	
80 3"	50	286	115	497	310	C80	1/4"G	
100 4"	50	327	115	558	367	C100	1/4"G	
125 5"	50	361	140	632	432	C125	1/4"G	
150 6"	60	412	140	708	497	C125	1/4"G	
200 8"	60	514	175	872	635	C160	1/4"G	
250 10"	70	609	220	1037	777	C200	1/4"G	
300 12"	70	694	220	1172	905	C200	1/4"G	
350 14"	96	810	277	1345	1047	C250	3/8"G	
400 16"	100	910	277	1495	1171	C250	3/8"G	
450 18"	106	1028	382	1693	1301	C250	1/2"G	
500 20"	110	1118	382	1833	1461	C300	1/2"G	
600 24"	110	1326	444	2206	1711	C300	1/2"G	

电动执行器/Electric actuator

Series TSE/M



口径 DN	尺寸/Dimensions							
	A	B	C	D	E	øG	H	O max.
mm inch	mm	mm	mm	mm	mm	mm	mm	mm
50 2"	40	239	357	514	299	160	527	232
65 2-1/2"	40	261	379	514	299	160	549	255
80 3"	50	286	404	514	299	160	574	310
100 4"	50	327	445	514	299	160	615	367
125 5"	50	361	479	514	299	160	649	432
150 6"	60	412	530	514	299	160	1100	497
200 8"	60	514	632	514	299	160	1252	635
250 10"	70	609	739	538	312	200	1319	777
300 12"	70	694	824	538	312	200	1409	905
350 14"	96	810	940	538	312	200	1525	1047
400 16"	100	910	1085	708	375	315	1670	1171
450 18"	106	1028	1203	708	375	315	1803	1301
500 20"	110	1118	1293	708	375	315	1893	1461
600 24"	110	1326	1505	708	375	315	2205	1711